



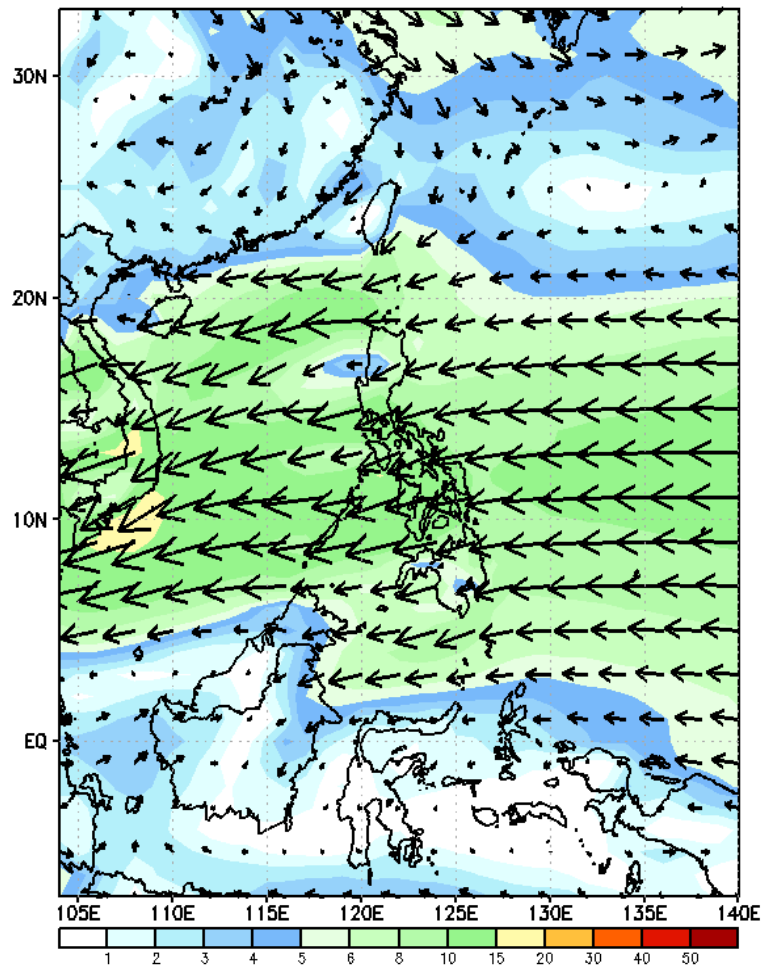
Week 1 & Week 2 Forecast for the Philippines using GEFS Model



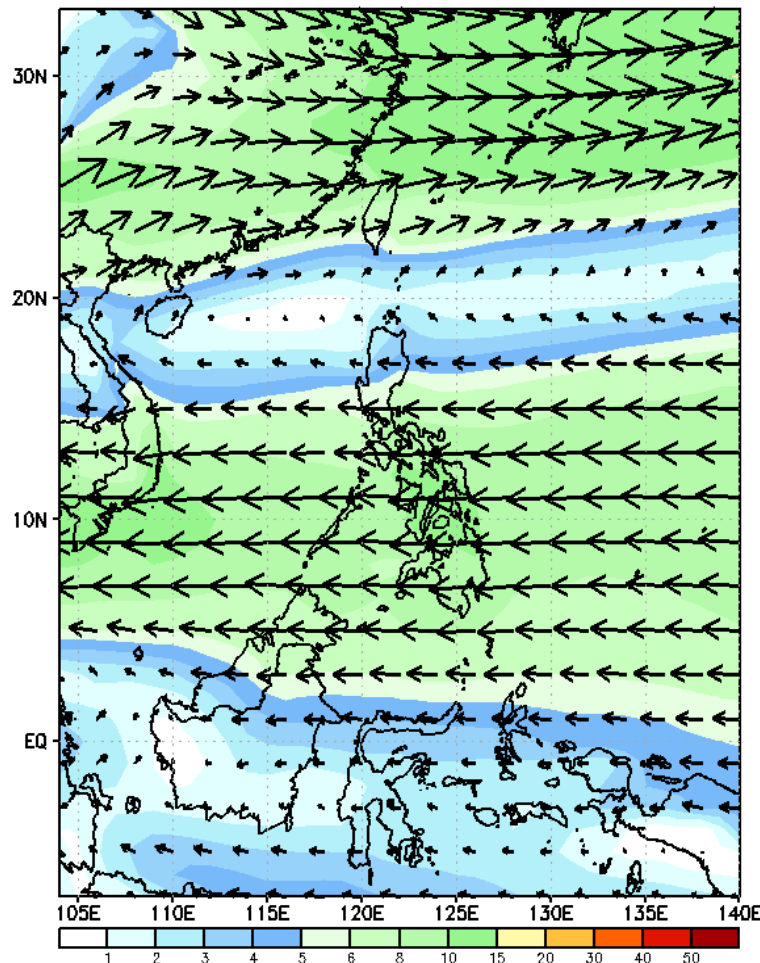
GEFS Week-1 Wind Forecasts:

Week 1: Nov 22-28, 2024

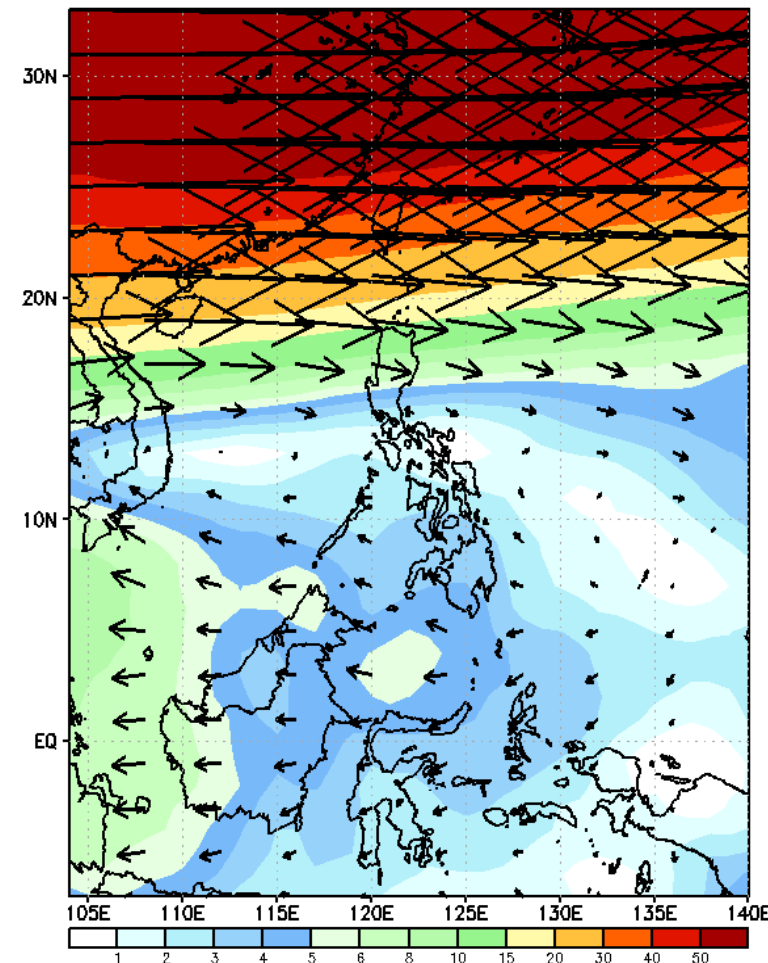
GEFS Week-1 850-hPa Wind Total
Valid: 20241122 - 20241128



GEFS Week-1 700-hPa Wind Total
Valid: 20241122 - 20241128

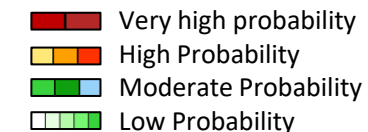


GEFS Week-1 200-hPa Wind Total
Valid: 20241122 - 20241128



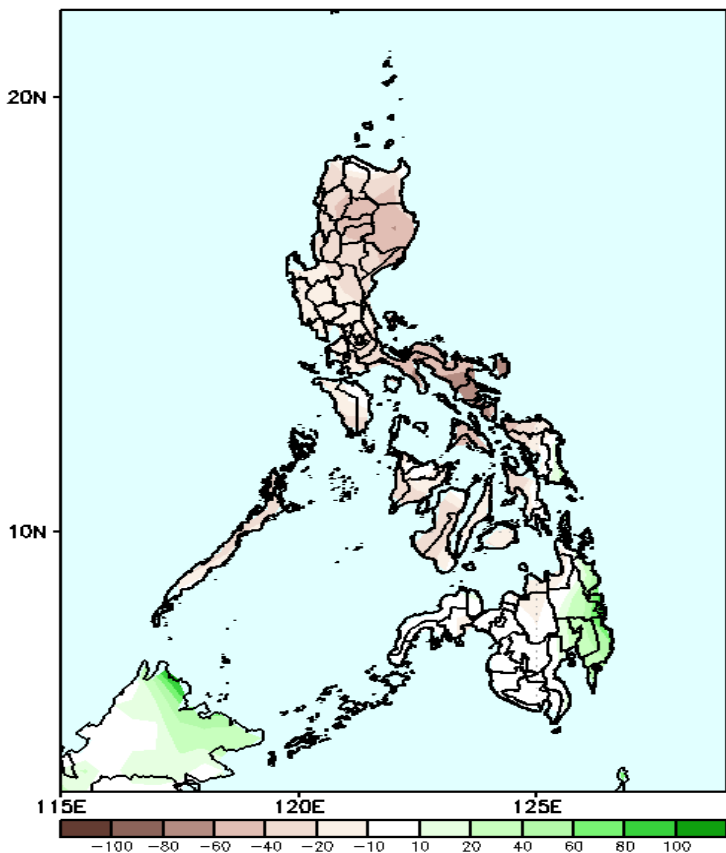
Northeast Monsoon affecting Extreme Northern Luzon, Easterlies will likely affect the rest of the country during the forecast period

Precipitation Anomaly and Exceedance Probability > 25/50 mm



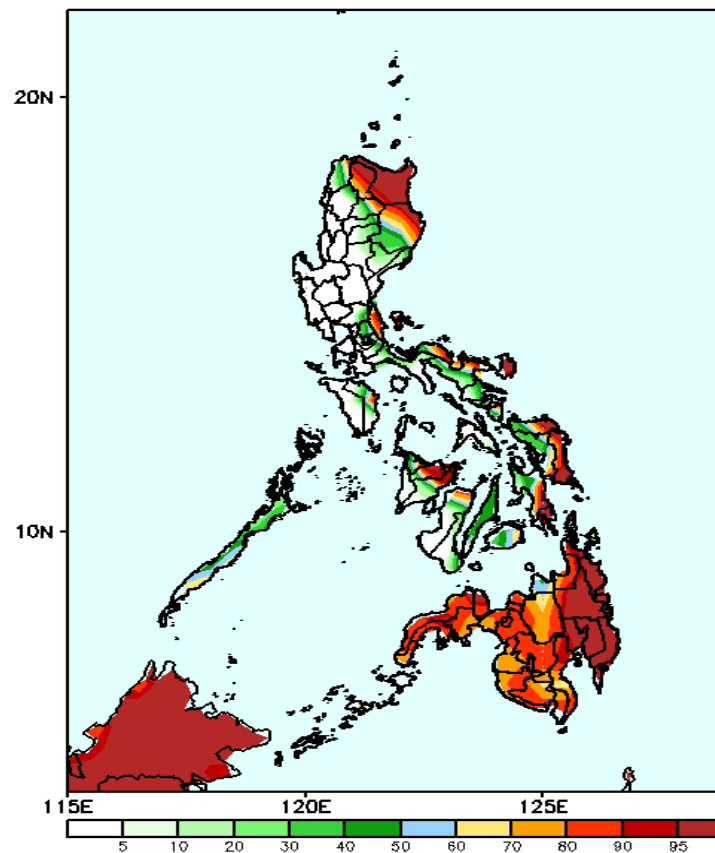
Week 1: Nov 22-28, 2024

GEFS Week-1 Precip Anomaly
Valid: 20241122 - 20241128



Rainfall deficit of 20-80mm is most likely in most parts of the country except in eastern Mindanao where there is 20-60mm increase of rainfall is expected.

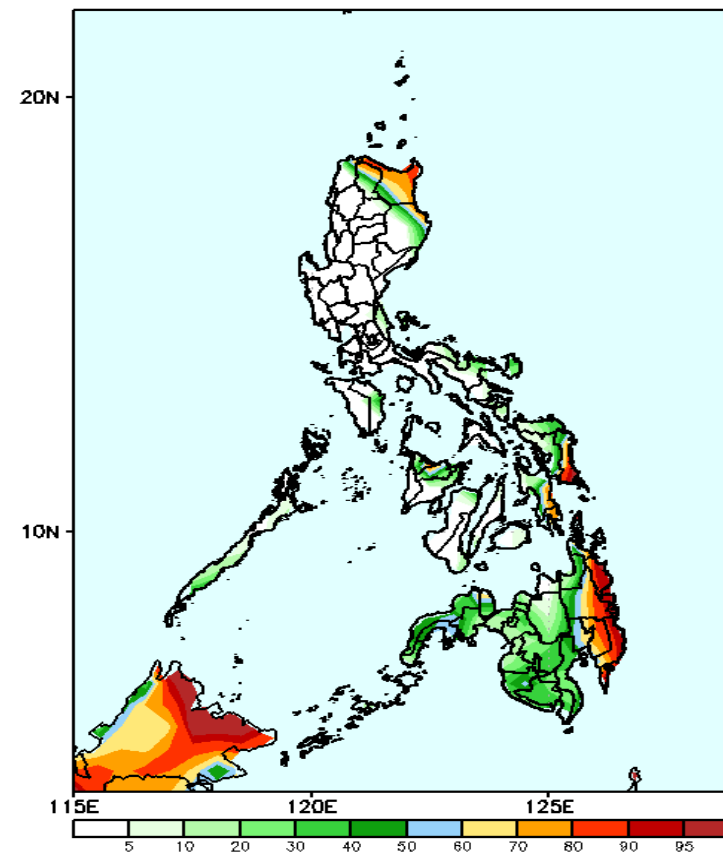
GEFS Week-1 Exceedance Prob. > 25mm
Valid: 20241122 - 20241128



Probability to Exceed 25mm

- High to very high over Apayao, Cagayan, northern part of Isabela, Aurora, Camarines Norte & Sur, Catanduanes, Northern & eastern Samar, Southern Leyte Capiz, northern Iloilo, and Mindanao;
- Moderate to high over Ilocos Norte, Kalinga, the rest of Isabela, Or. Mindoro, and the rest of eastern Luzon, eastern and central Visayas
- Low to moderate over the rest of Luzon and western Visayas.

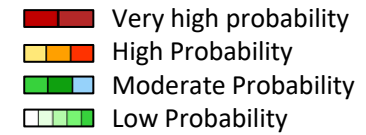
GEFS Week-1 Exceedance Prob. > 50mm
Valid: 20241122 - 20241128



Probability to Exceed 50mm

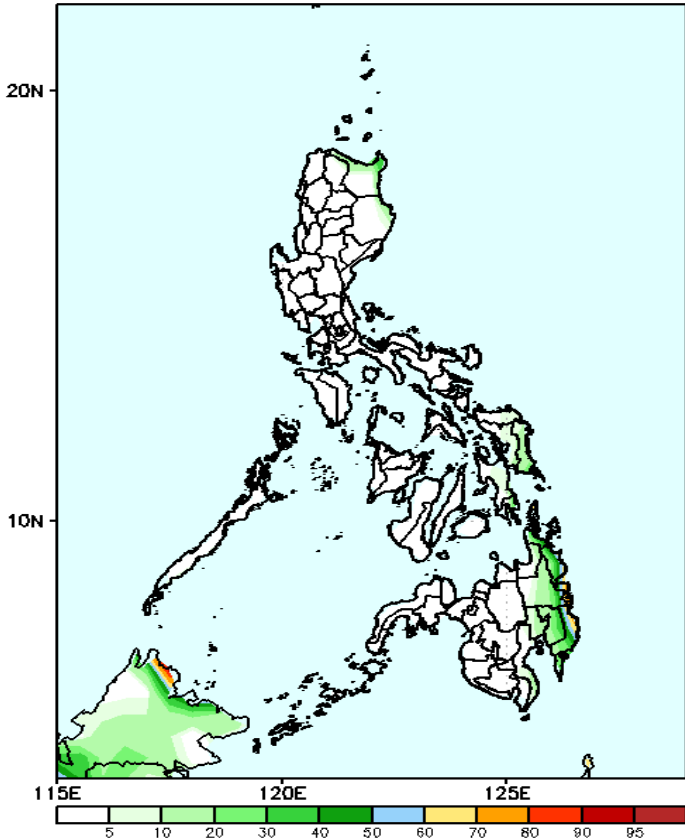
- High to very high over Eastern Samar, Surigao del Sur, and Davao Oriental;
- Moderate to high over the northern part of Apayao, Cagayan, northern part of Ilocos Sur and Isabela, Aklan, Capiz, Southern Leyte and the rest of Eastern Mindanao;
- Low to moderate over the rest of Mindanao;
- Low over the rest of the country.

Exceedance Probability > 100/150/200 mm

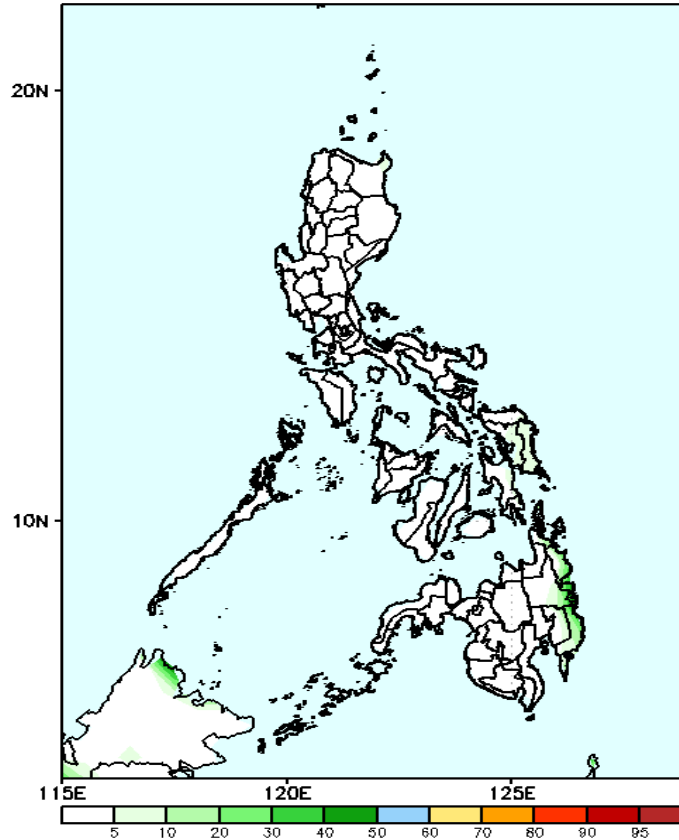


Week 1: Nov 22-28, 2024

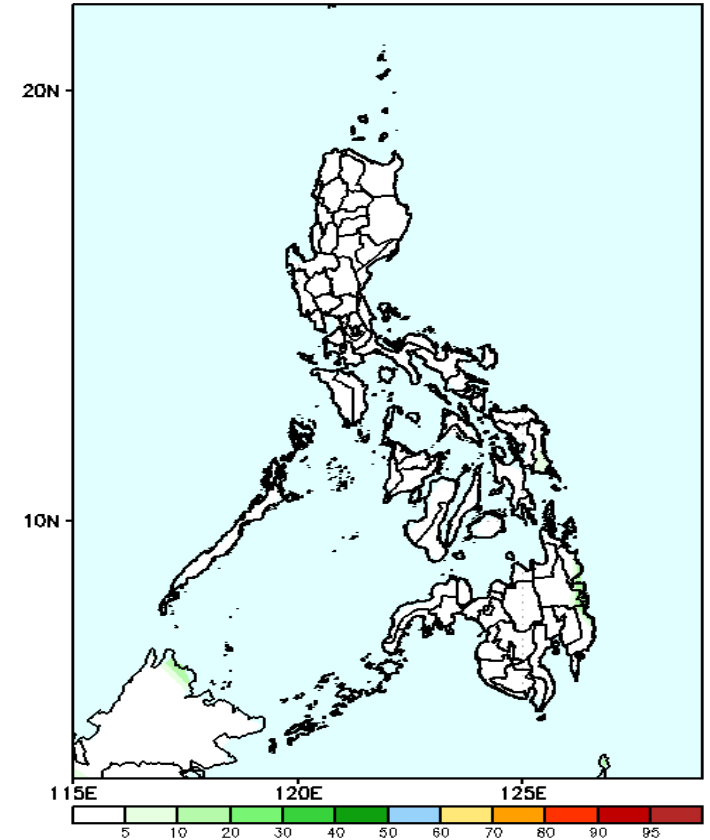
GEFS Week-1 Exceedance Prob. > 100mm
Valid: 20241122 - 20241128



GEFS Week-1 Exceedance Prob. > 150mm
Valid: 20241122 - 20241128



GEFS Week-1 Exceedance Prob. > 200mm
Valid: 20241122 - 20241128



Probability to Exceed 100mm

- Moderate to high over the eastern part Surigao del Sur, and Davao Oriental;
- Low over the rest of the country.

Probability to Exceed 150mm

- Low across the country.

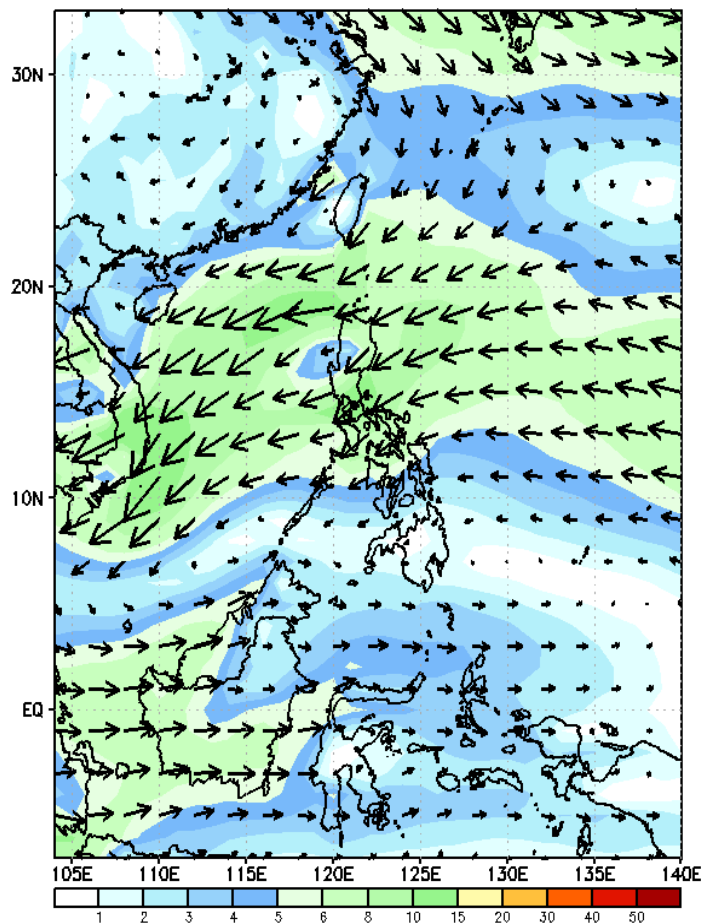
Probability to Exceed 200mm

- Low across the country.

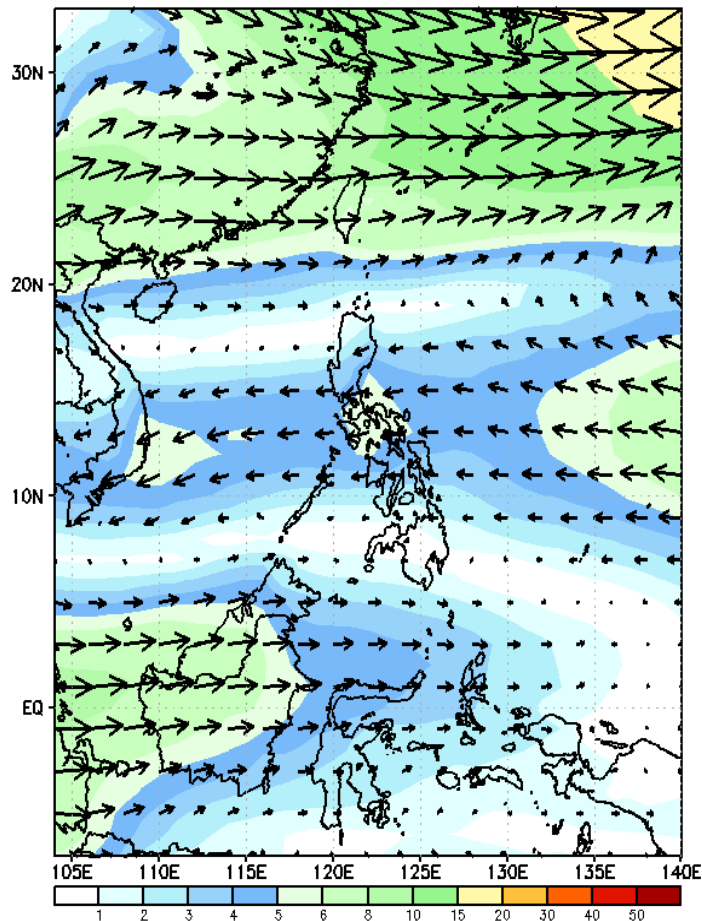
GEFS Week-2 Wind Forecasts:

Week 2: Nov 29- Dec 05, 2024

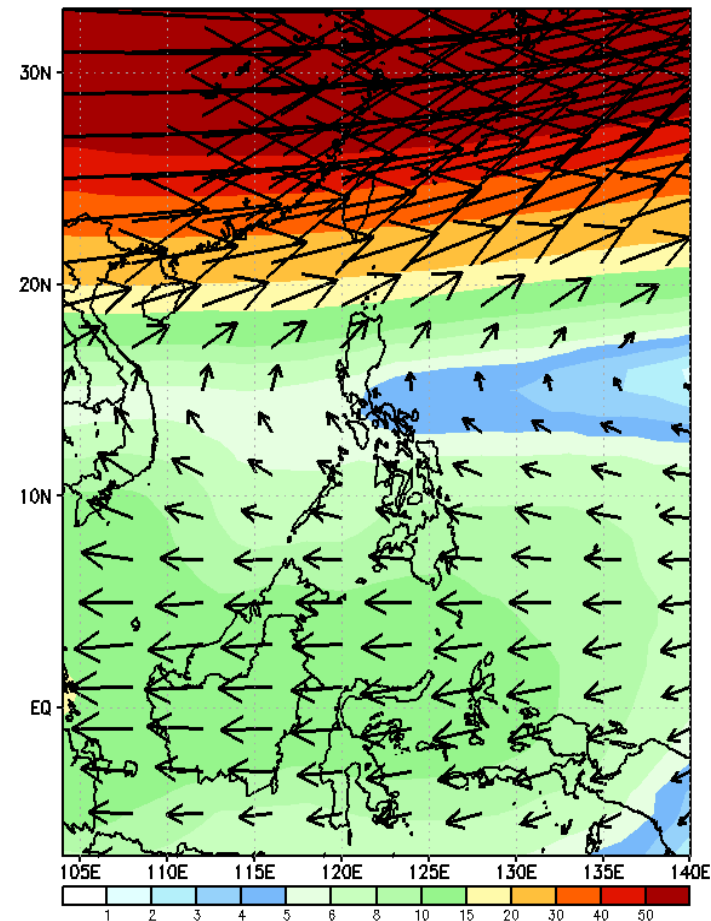
GEFS Week-2 850-hPa Wind Total
Valid: 20241129 - 20241205



GEFS Week-2 700-hPa Wind Total
Valid: 20241129 - 20241205

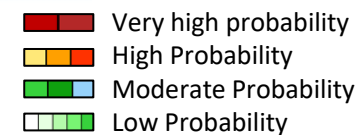


GEFS Week-2 200-hPa Wind Total
Valid: 20241129 - 20241205



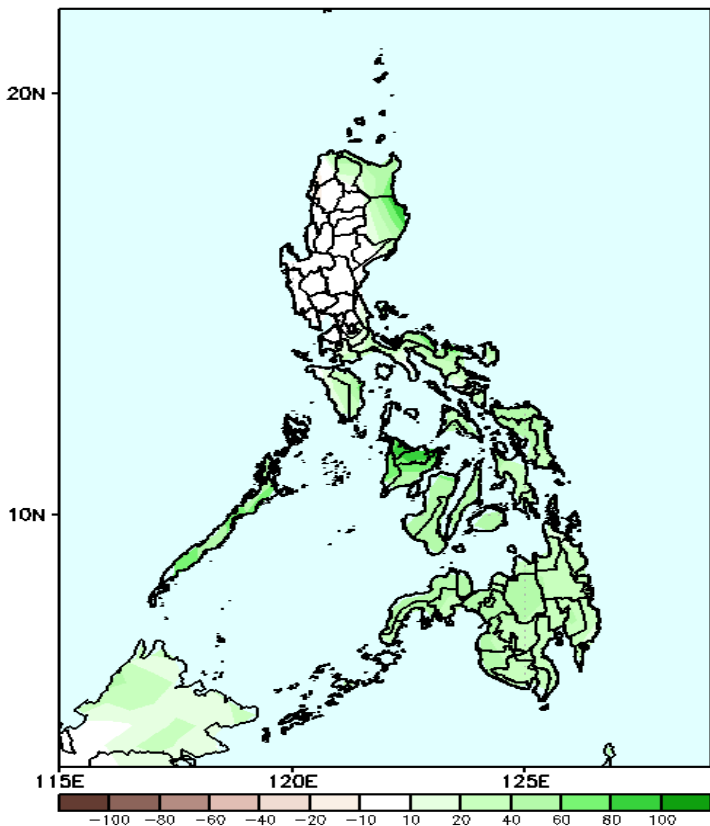
Northeast Monsoon affecting Northern and Central Luzon, Easterlies will likely affect the rest of the country during the forecast period

Precipitation Anomaly and Exceedance Probability > 25/50 mm



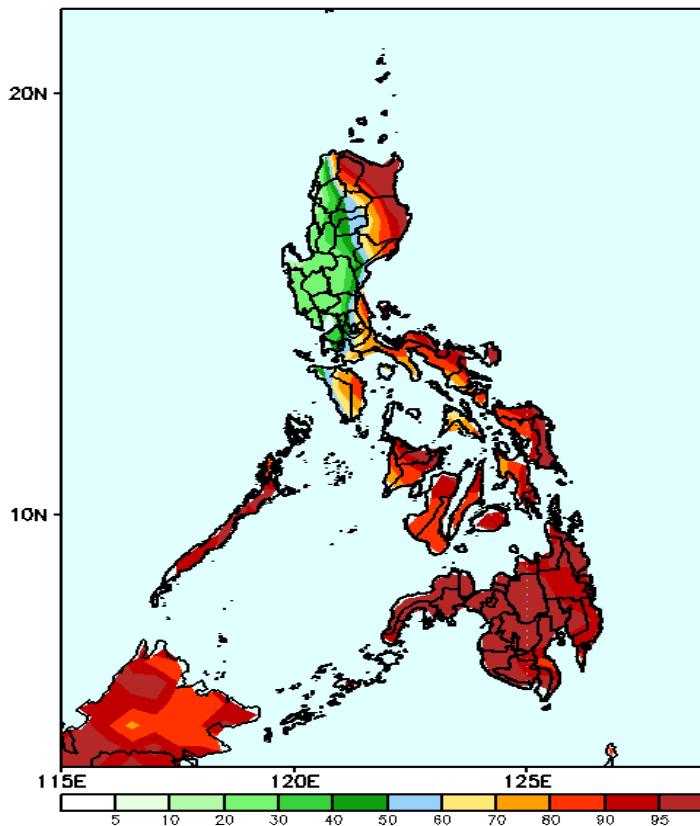
Week 2: Nov 29- Dec 05, 2024

GEFS Week-2 Precip Anomaly
Valid: 20241129 - 20241205



Increase of Rainfall of 20-80mm is most likely in Apayao, Cagayan, Isabela, and in most parts of southern Luzon, Visayas and Mindanao.

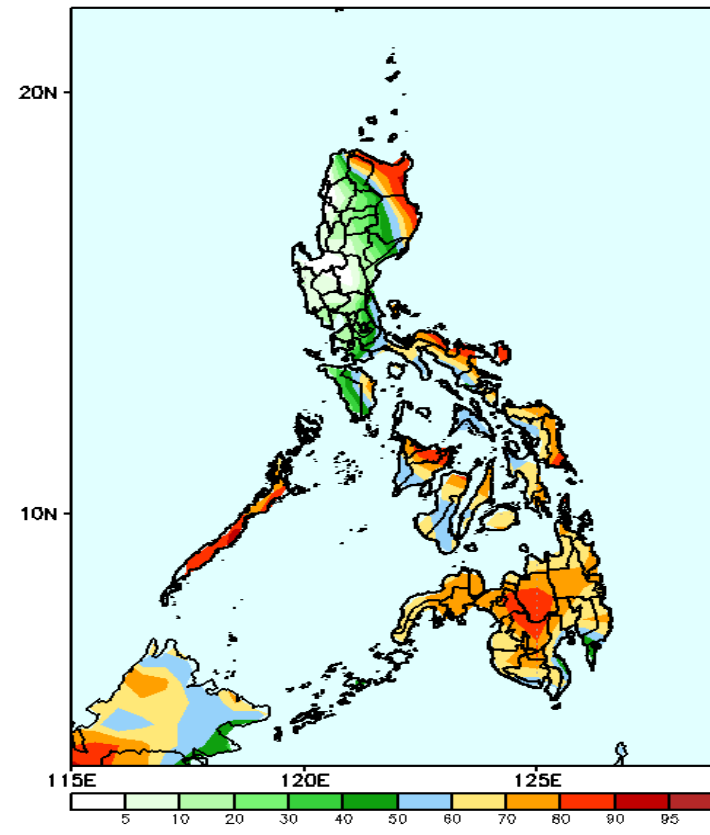
GEFS Week-2 Exceedance Prob. > 25mm
Valid: 20241129 - 20241205



Probability to Exceed 25mm

- High to very high over Apayao, Eastern Luzon, Palawan, most of Visayas and Mindanao;
- Moderate to high over the rest of CAR, Aurora, Rizal, Laguna, Batangas, the rest of MIMAROPA, and Masbate.
- Low to moderate over the rest of Luzon.

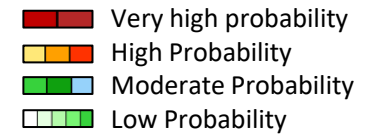
GEFS Week-2 Exceedance Prob. > 50mm
Valid: 20241129 - 20241205



Probability to Exceed 50mm

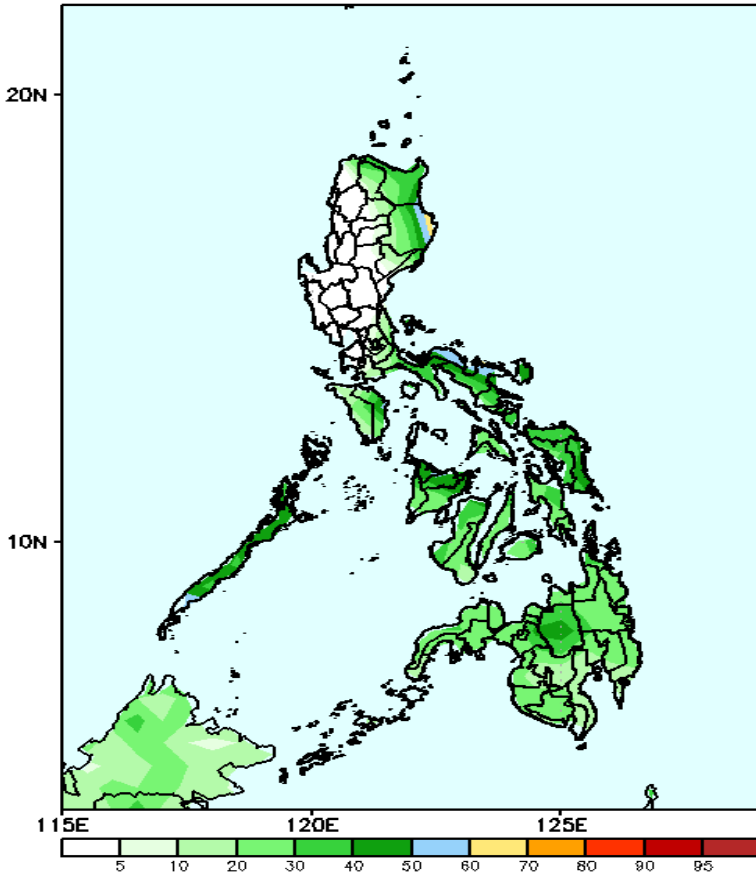
- Moderate to high over Apayao, Cagayan, Isabela, Quezon, Bicol Region, Oriental Mindoro, Palawan, and most parts of Visayas and Mindanao;
- Low to moderate over the rest of Luzon;

Exceedance Probability > 100/150/200 mm



Week 2: Nov 29- Dec 05, 2024

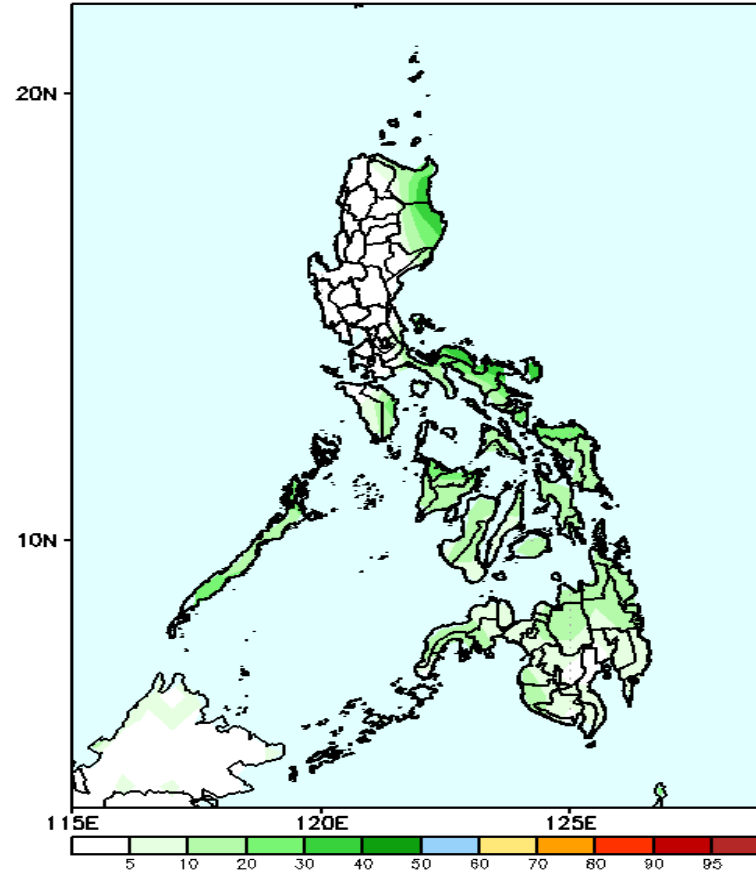
GEFS Week-2 Exceedance Prob. > 100mm
Valid: 20241129 - 20241205



Probability to Exceed 100mm

- Moderate to high over the eastern part of Isabela;
- Low to moderate over the rest of Eastern Luzon, MIMAROPA, and most parts of Visayas and Mindanao.
- Low over the rest of the country.

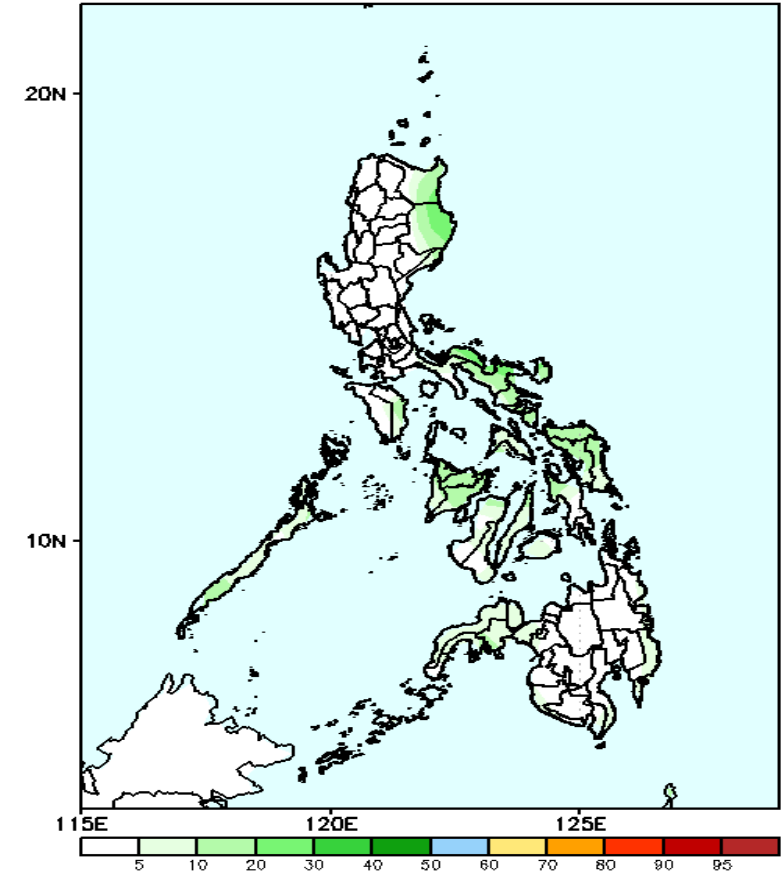
GEFS Week-2 Exceedance Prob. > 150mm
Valid: 20241129 - 20241205



Probability to Exceed 150mm

- Low to moderate over the eastern section of Luzon, MIMAROPA, and most parts of Visayas and Mindanao
- Low over the rest of Luzon.

GEFS Week-2 Exceedance Prob. > 200mm
Valid: 20241129 - 20241205

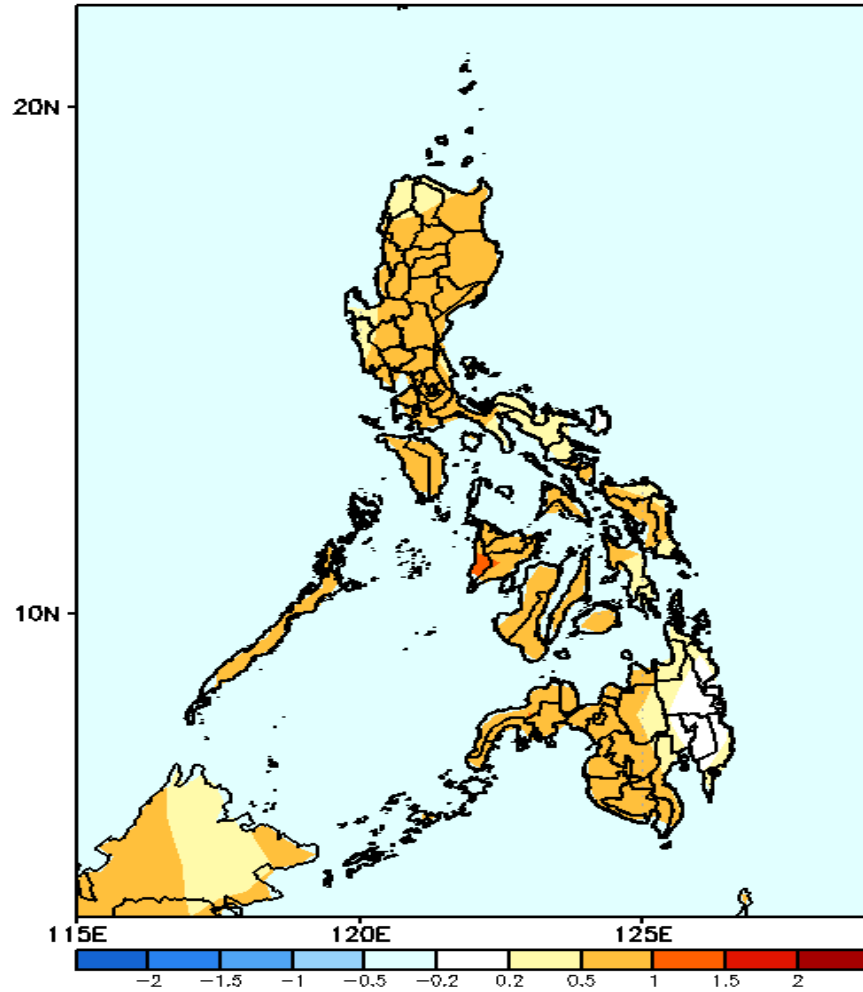


Probability to Exceed 200mm

- Low across the country.

GEFS Week-1 & 2 Forecasts: T2m Anomaly

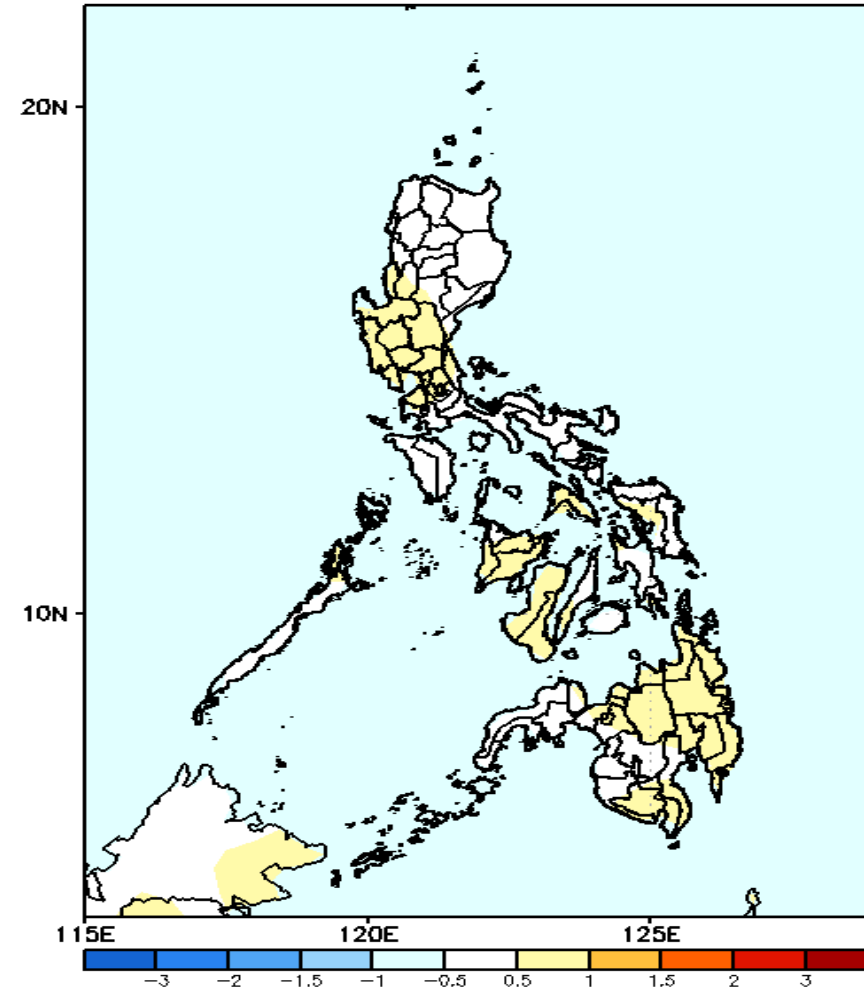
GEFS Week-1 T2m Anomaly
Valid: 20241122 - 20241128



2m Temperature Week 1: Nov 22-28, 2024

Warmer than average surface air temperature will likely be experienced in most parts of the country except in eastern Mindanao where near to slightly warmer temperature is expected.

GEFS Week-2 T2m Anomaly
Valid: 20241129 - 20241205



2m Temperature Week 2: Nov 29- Dec 05, 2024

Near to slightly warmer than average surface air temperature will likely be experienced in most parts of the country.